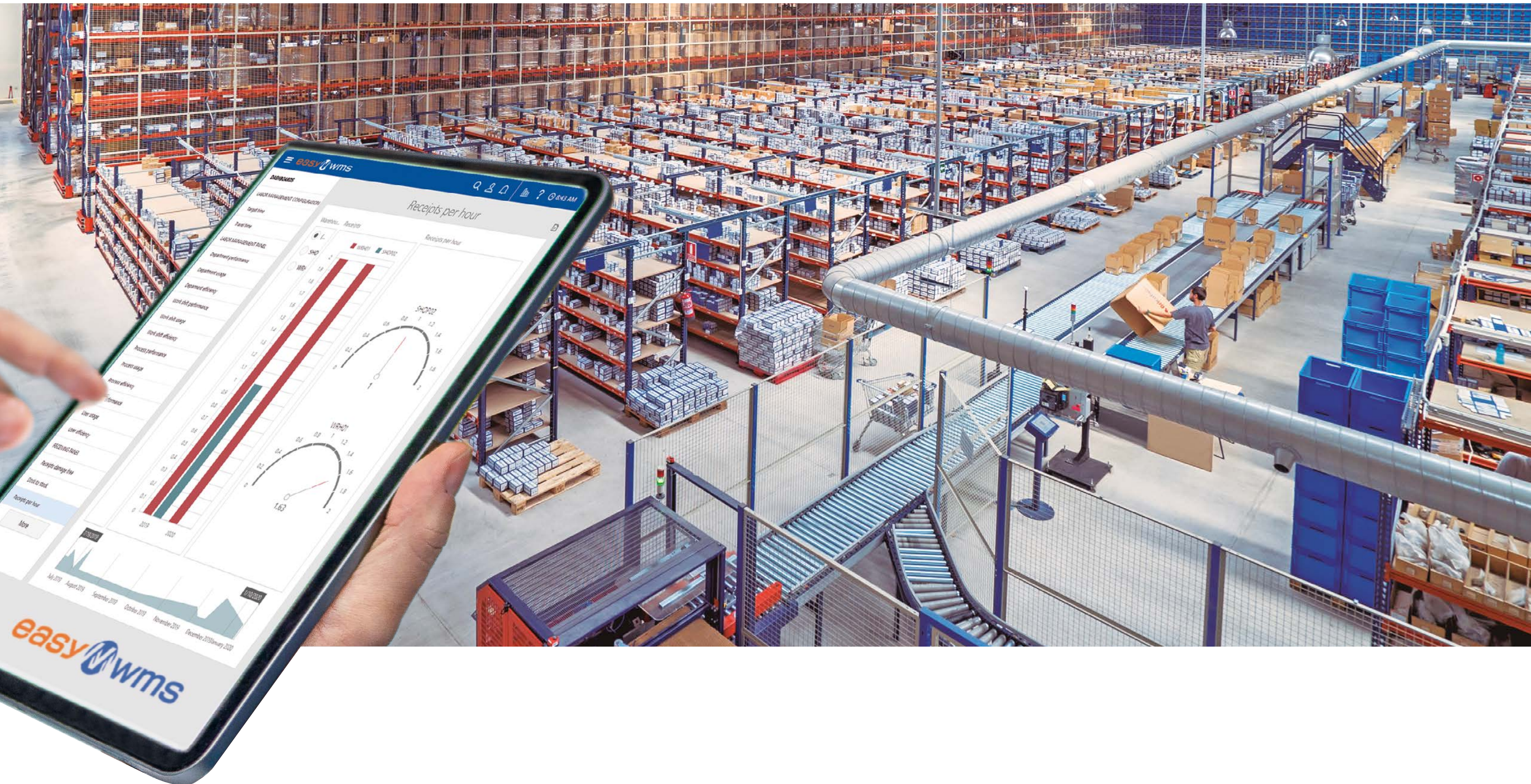


WAREHOUSE MANAGEMENT SYSTEM

OPTIMIZE YOUR SUPPLY CHAIN



TECHNOLOGICAL INNOVATION FOR EFFICIENT WAREHOUSES

Capability is a competitive resource in this market, where companies must be ready and able to keep pace logistically with the daily demands of their customers.

Updated supply chain processes mean you can meet the growing demands of customers and consumers with faster delivery times, better products and customer care. The Internet of Things, artificial vision and other **cutting-edge technologies** are game-changers for advancing companies.

Due to these changes, more and more companies must reorganize to deal with the unique challenges of doing business in different sectors. These days, every

warehouse deals with big data, which involves analyzing massive amounts of information. Thus, it is almost impossible to set up a distribution chain without a warehouse management system to improve overall operations.

Mecalux Software Solutions knows what you need, and that is why we are offering new Easy WMS solutions to help grow your business. We can help increase productivity in your storage facility and manufacturing centers, ensuring top quality and traceability at each stage.

Easy software solutions We know our way around your warehouse

Our new Easy WMS platform provides a variety of solutions for the entire logistics process. So, your company will be able to control and take action in all operations (manufacturing, storage of raw materials and finished products, picking and goods distribution). Plus, you can analyze your entire supply chain, providing global, open-ended visibility.

Its user-friendly interface is a highly intuitive platform, since it adapts to each feature and requirement to improve your company's productivity.

warehouse management system

**WMS for
Ecommerce**

**Multi Carrier
Shipping
Software**

**Store
Fulfillment**

**WMS for
Manufacturing**

**Supply Chain
Analytics
Software**

**Marketplaces
& Ecommerce
Integration**

**3PL Warehouse
Management
Software**

**Labor
Management
System (LMS)**

**Warehouse
Slotting
Software**

**Yard
Management
System**

Easy WMS is a versatile system capable of **managing** via handheld radiofrequency devices), **mixed warehouses**

operations in **manual warehouses** or large **automated installations**.

INTERCONNECTED SOLUTIONS FOR YOUR SUPPLY CHAIN

Warehouse Management System

Easy WMS is a powerful, versatile, scalable and flexible software program that can manage either a manually operated warehouse (paper or radiofrequency device run), a mixed facility or a large automated warehouse with the same efficiency.

Use it to streamline physical product flows and document management, from warehouse inputs to dispatches for guaranteed full end-to-end traceability.

Advantages

- » **Receive real-time stock control**
- » **Lower logistics costs**
- » **Increase storage capacity**
- » **Reduce handling tasks**
- » **Eliminate errors**
- » **Get precise, high-speed picking**
- » **Adapt to new ecommerce needs**
- » **Manage omnichannel operations**
- » **Achieve a fast ROI (in 12-18 months)**



EASY WMS in the cloud

- » **Lower initial investment** since in-house servers are not needed.
- » Faster, simpler **implementation**.
- » Easier, more affordable **technical support and maintenance**. Total security with Microsoft Azure.
- » Software **version up-to-date** at all times.
- » **Maximum availability** to guarantee business continuity.
- » **Fees adapted** to the needs of each business.

We collaborate with leading providers that endorse the quality, dependability and high technical capability of Easy WMS:



Mecalux Software Solutions, managing more than 1,000 facilities

The best thing about Easy WMS is that it's so easy to use. Operators only need to follow the step-by-step instructions from this WMS to complete tasks quickly and safely.

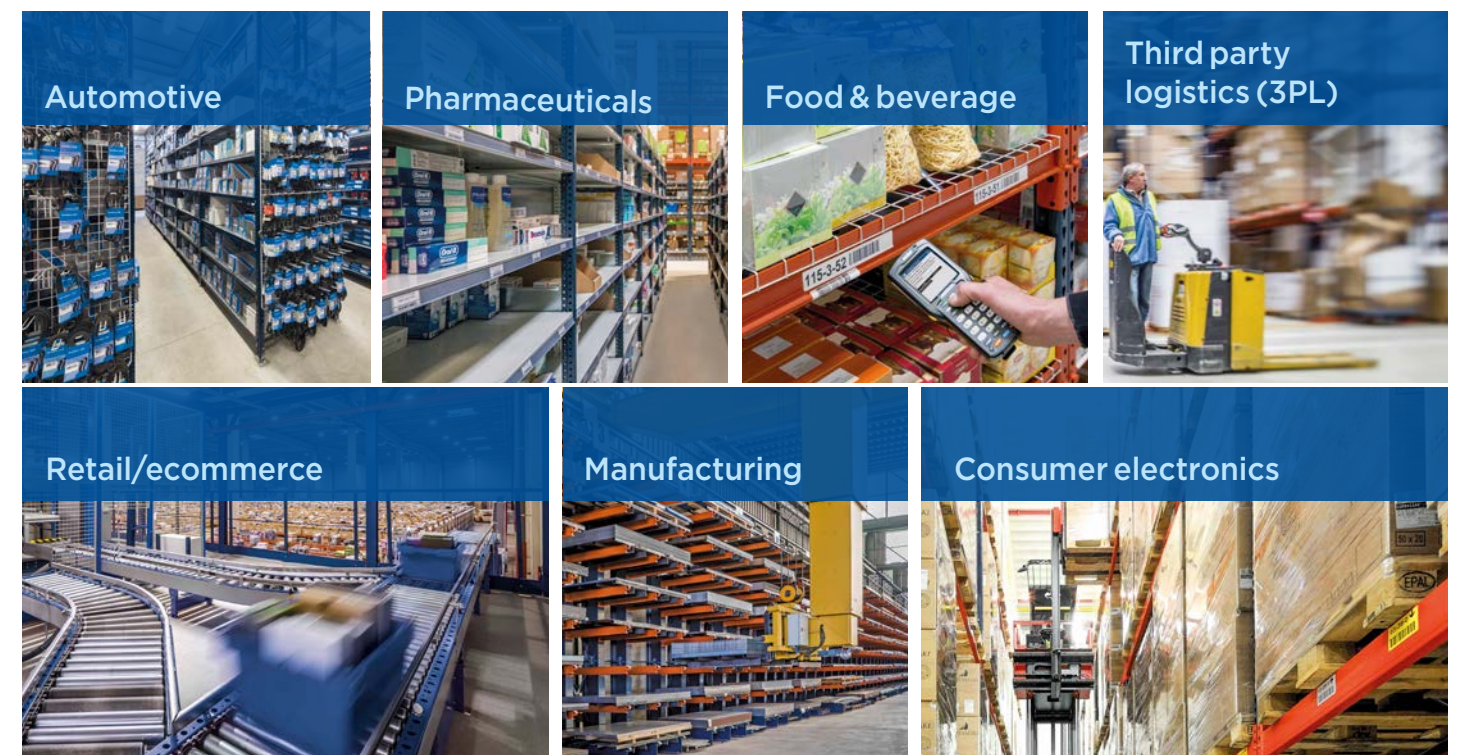
James Hansen
Executive Vice-President
Yamazen (USA)

Easy WMS has helped us to cope with the growth of our company. Our productivity has increased by 30% because, with the same amount of staff, we've been able to absorb the increase in orders.

Jesús García
Spare Parts Department Manager
Motos Bordoy (Spain)

With the SaaS mode of Easy WMS, we don't have to worry about server management and can concentrate on our business.

Anthony Le Fur
Manager SurDiscount
(France)



Check out our case studies at interlakemecalux.com



WMS FOR ECOMMERCE

Ensures efficient multichannel logistics. Optimizes the logistics operations of online shops, regardless of their size, number of daily orders or storage capacity.



MULTI CARRIER SHIPPING SOFTWARE

Automates product packaging, labeling and shipping. Coordinates direct communication between the warehouse and the various transportation agencies.



STORE FULFILLMENT

Synchronizes inventory and workflows to ensure optimal stock management between the central warehouse and the network of brick-and-mortar shops.



WMS FOR MANUFACTURING

Facilitates traceability in manufacturing processes. Guarantees the continuous supply of raw materials to the production lines.



SUPPLY CHAIN ANALYTICS SOFTWARE

Analyzes the thousands of pieces of data generated daily in a warehouse, allowing the manager to make strategic decisions based on the real throughput of operations.



MARKETPLACES & ECOMMERCE PLATFORMS INTEGRATION

Synchronizes the stock in the warehouse with the **online catalog** in real time. Easy WMS automatically connects to the main digital sales platforms and marketplaces such as **Amazon, eBay and PrestaShop.**



3PL WAREHOUSE MANAGEMENT SOFTWARE

Manages billing between a 3PL and its customers. A dedicated access platform provides information on stock condition and how to place orders or request customized shipments.



LABOR MANAGEMENT SYSTEM (LMS)

Maximizes operational productivity. It objectively measures the throughput of operators, detecting opportunities for improvement for the company.



WAREHOUSE SLOTTING SOFTWARE

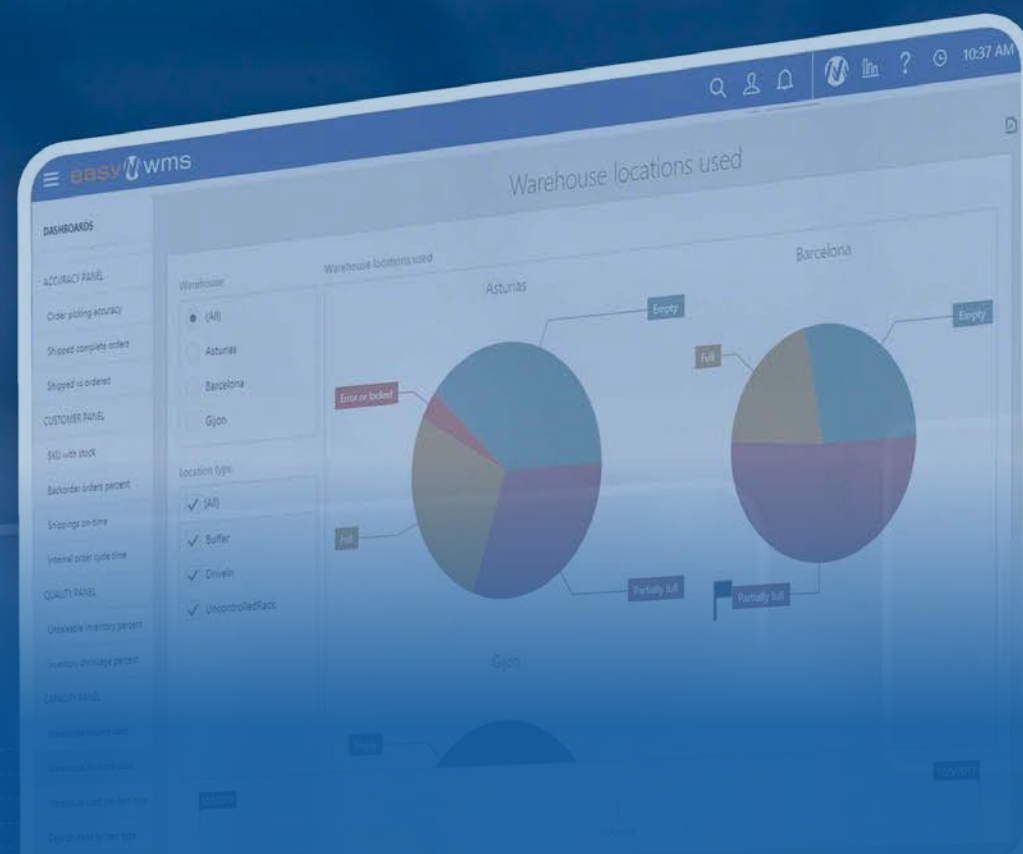
Optimizes slotting management in the warehouse. It determines the optimal slotting for each SKU based on a set of predetermined rules and criteria (historic, current and future demand).



YARD MANAGEMENT SYSTEM

Supervises the movement of vehicles in the yard at the warehouse or distribution center. Optimizes loading dock operations to improve vehicle flow and avoid bottlenecks with entering and exiting goods.

**RISE TO
THE CHALLENGE.
MAKE YOUR SUPPLY
CHAIN MORE
EFFICIENT.**



Gartner does not endorse any vendor, product or service depicted in its research publications, and does not advise technology users to select only those vendors with the highest ratings or other designation. Gartner research publications consist of the opinions of Gartner's research organization and should not be construed as statements of fact. Gartner disclaims all warranties, expressed or implied, with respect to this research, including any warranties of merchantability or fitness for a particular purpose. GARTNER and MAGIC QUADRANT are a registered trademark and service mark of Gartner, Inc. and/or its affiliates in the U.S. and internationally and are used herein with permission. All rights reserved.

50

years designing
warehouses



370

dedicated software
engineers



1,000+

warehouses
with Easy WMS



36

countries where
Easy WMS manages
warehouses



interlakemecalux.com/software - info@interlakemecalux.com - Tel. 1-877-632-2589

MECALUX HAS A PRESENCE IN MORE THAN 70 COUNTRIES WORLDWIDE

We have offices in: Argentina - Belgium - Brazil - Canada - Chile - Colombia - Croatia - Czechia - France - Germany - Italy - Netherlands - Mexico - Peru - Poland - Portugal - Romania - Slovenia - Slovakia - Spain - Turkey - United Kingdom - Uruguay - USA